



Service Letter

SL06-462  
January 2006

## **Discordance between guide tool and fuel valve bore, L/S60-70MC-C**

Action Code: WHEN CONVENIENT

Dear Sirs

Upon a routine check, we have discovered a discordance between the guide disc for the Milling Tool for Fuel Valve Bore and the fuel valve bore in the Cylinder Cover for the engine types L/S60MC-C and L/S70MC-C. (Encl. 1, Fig. 1)

In some cases the guide disc has a diameter of  $\varnothing 64.8$  mm and the fuel valve bore has a diameter of  $\varnothing 69$  mm.

However, in order to align the grinding tool in the most optimum way and thereby ensure even grinding of the valve seat, the correct guide disc should have a diameter of  $\varnothing 68.8$  mm. (Encl.1, Fig. 2)

HEAD OFFICE (& postal address)  
MAN B&W Diesel A/S  
Teglholmegade 41  
2450 Copenhagen SV  
Denmark  
Phone: +45 33 85 11 00  
Fax: +45 33 85 10 30  
manbw@dk.manbw.com  
www.manbw.com

DIESEL SERVICE  
Teglholmegade 41  
2450 Copenhagen SV  
Denmark  
Phone: +45 33 85 11 00  
Fax: +45 33 85 10 49  
diesel-service@dk.manbw.com

PRODUCTION  
Teglholmegade 35  
2450 Copenhagen SV  
Denmark  
Phone: +45 33 85 11 00  
Fax: +45 33 85 10 17  
manufacturing/cph@dk.manbw.com

FORWARDING & RECEIVING  
Teglholmegade 35  
2450 Copenhagen SV  
Denmark  
Phone: +45 33 85 11 00  
Fax: +45 33 85 10 16  
MAN B&W Diesel A/S  
Denmark  
Reg. No.: 39661314

If you have a guide disc with a diameter of  $\varnothing 64.8$  mm and the diameter of the uppermost cylindrical surface of the fuel valve bore of your cylinder covers is  $\varnothing 69$  mm please contact MAN B&W Diesel A/S by using the enclosed form.

A new guide disc with a diameter of  $\varnothing 68.8$  mm will be forwarded to you free of charge.

Questions or comments regarding this SL should be directed to our Dept. 2140.

Yours faithfully

MAN B&W Diesel A/S



Carl-Erik Egeberg



Leif Hauerslev

Encl.

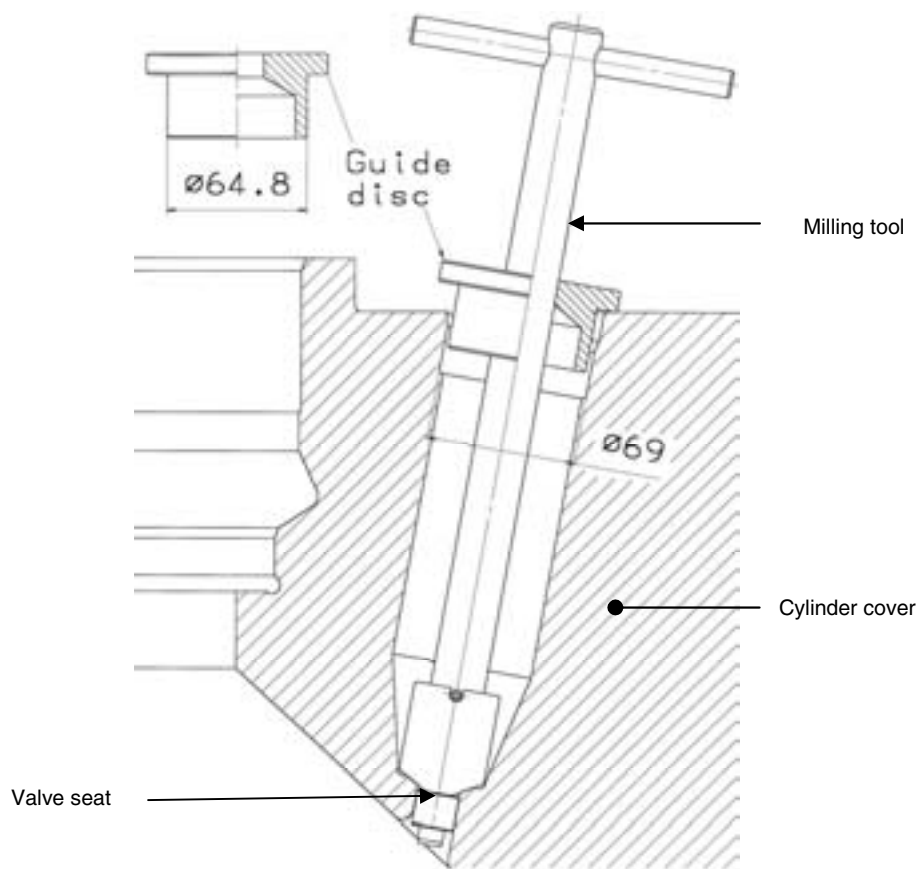


Fig. 1

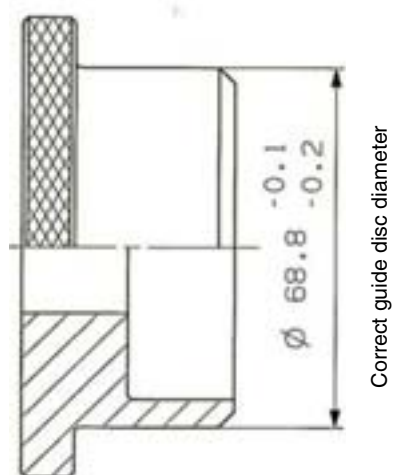


Fig. 2

## Order form – Guide Disc

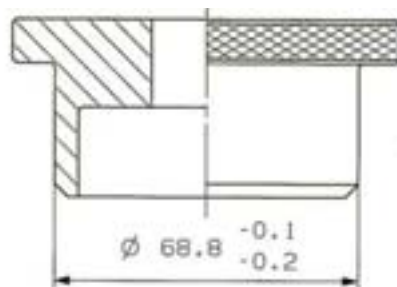
After filling out the order form, please send as fax to:

**MAN B&W Diesel A/S, Copenhagen, Denmark**

**Fax No.: +45 33 85 10 49 att: Dept. 4210**



Please forward below Guide Disc, part no. 5031404-4 to the below address.



Ship name:

Engine type:

IMO No. / Lloyds No.:

Date:

Shipowners reference:

Delivery address for tool update: